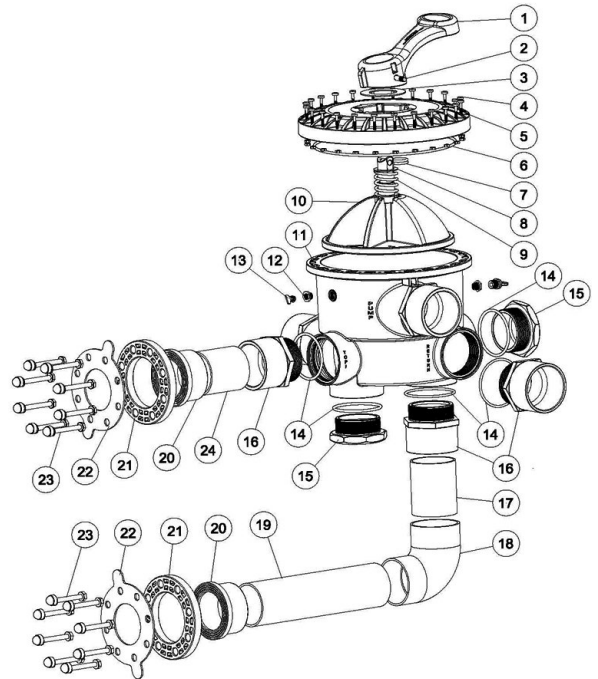


4.0" Side Mount Valve With Piping Kit

Key No.	Part No.	Description	Qty
1	01112052	4" Handle	1
2	03018161	Pin for Handle	1
3	01181061	Washer for Handle	1
4	89281205	M6 x 42 Screw with Nut	24
5	01112053	Standard Lid	1
6	02010214	O-Ring for 4" Valve Lid	1
7	02010215	O-Ring for 4" Valve Rotor	2
8	01181062	Washer for Spring	1
9	03014023	Spring	1
10	89280808	4" Valve Rotor with Spider Gasket	1
11	01112055	Bottom Body	1
12	89280119	Drain Plug Fitting	2
13	89021307	Drain Plug with O-Ring	2
14	02021061	O-Ring for 4" Side Mount Valve Plug	7
15	01112056	Plug	2
16	01150184	4" Union	2
17	01151002	4" PVC Tube 140mm	1
18	01151032	Elbow Pipe Imperial 4"	1
19	01151002L	4" PVC Tube 410mm	1
20	01170027	4" Union (A)	2
21	01170026	4" Flange	2
22	02041006	4" Washer $\phi 214 \times \phi 109 \times 4$	2
23	89281207	M12 x 100 Screw with Nut	16
24	01151002	4" PVC Tube 120mm	1



WARNING



TURN PUMP OFF BEFORE CHANGING VALVE POSITION.



THIS FILTER OPERATES UNDER HIGH PRESSURE. WHEN ANY PART OF THE CIRCULATING SYSTEM (e.g., CLAMP, PUMP, FILTER, VALVES, ETC.) IS SERVICED, AIR CAN ENTER THE SYSTEM AND BECOME PRESSURIZED. PRESSURIZED AIR CAN CAUSE THE LID OR VALVE TO BE BLOWN OFF WHICH CAN RESULT IN SEVERE INJURY, DEATH, OR PROPERTY DAMAGE.



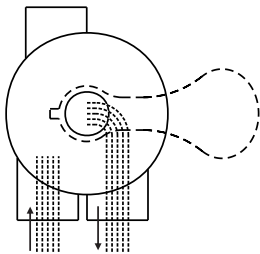
TO PREVENT DAMAGE TO THE PUMP AND FOR PROPER OPERATION OF THE SYSTEM, CLEAN PUMP STRAINER AND SKIMMER BASKETS REGULARLY.

FUNCTIONS OF VALVE POSITIONS

Valve Position	Function
FILTER	Normal Filtration and Vacuuming
BACKWASH	Cleaning Filter by reversing the flow
RINSE	Used after backwash to flush dirt from valve
WASTE	By-passes filter, used for vacuuming to waste or lowering water level
RECIRCULATE	By-passes filter for circulating water to pool
CLOSED	Shuts off all flow to filter or pool

FILTER

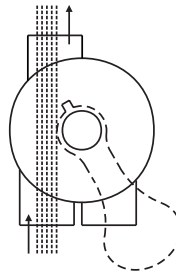
WASTE



IN FLOW OUT FLOW

WASTE

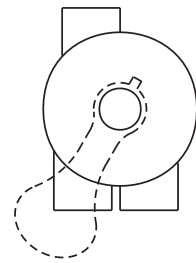
WASTE



IN FLOW OUT FLOW

CLOSED

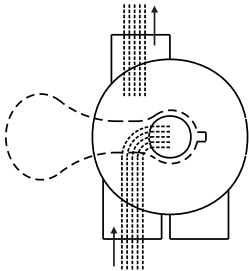
WASTE



IN FLOW OUT FLOW

BACKWASH

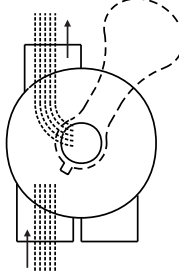
WASTE



IN FLOW OUT FLOW

RINSE

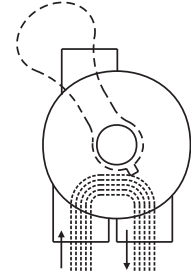
WASTE



IN FLOW OUT FLOW

RECIRCULATE

WASTE



IN FLOW OUT FLOW

GENERAL

- 1) Pipe tap boss provided for optional influent pressure gauge.
- 2) SERVICING VALVE(Stop pump,close gate valve in suction&discharge before proceeding):
 - a) Set handle in filter position.
 - b) Remove cover screws.
 - c) Lift cover and key assembly out.

TO ASSEMBLE:

- 1) Place valve key so that wedge opening is at TOP port (handle in Filter psn.). Flat edge of cover screw lug should align with flat edge of body screw lug.
- 2) Position cover O'Ring.
- 3) Secure assembly to body with cover screws. Tighten cover screws evenly and alternately. Do not over-tighten.